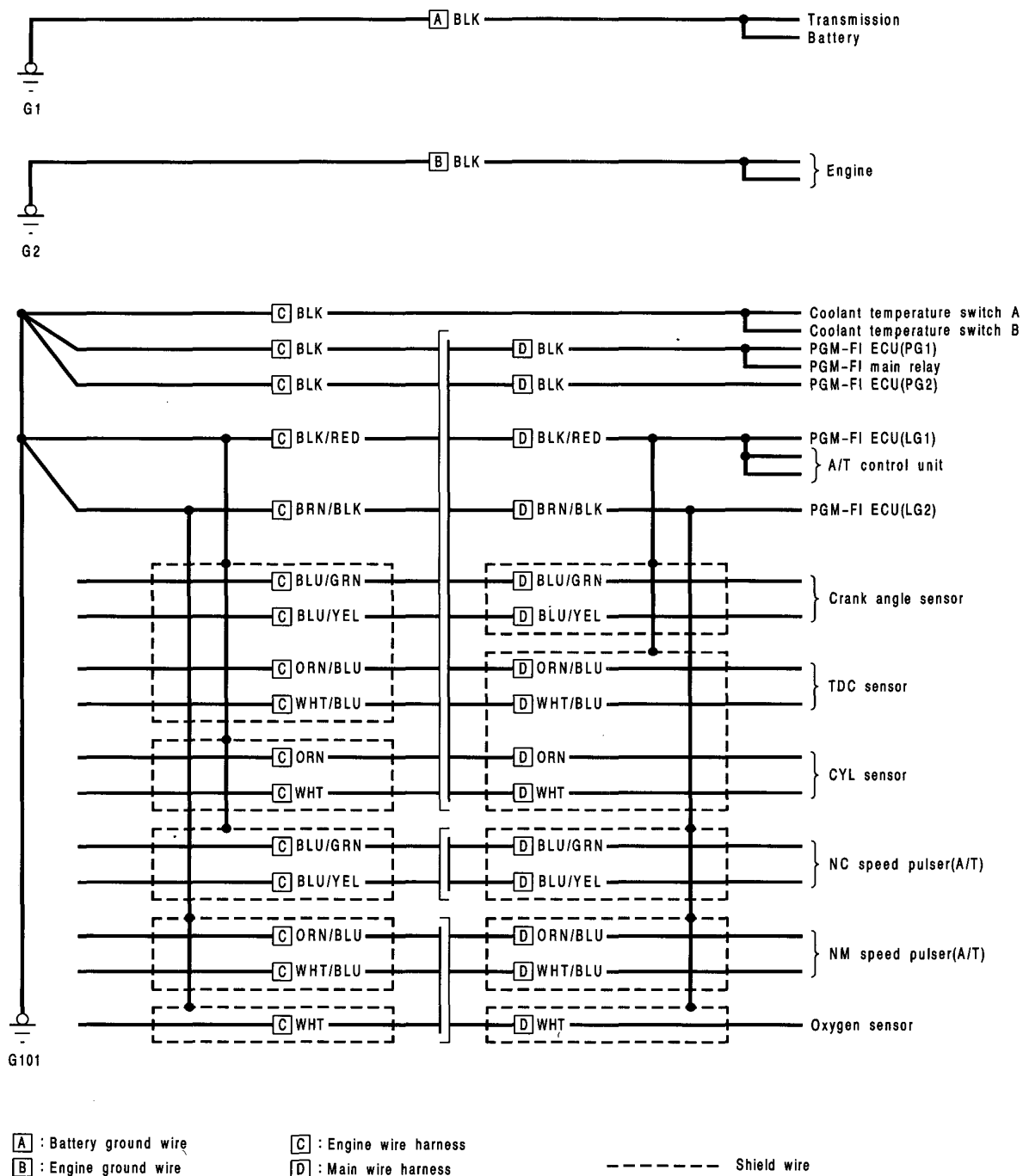


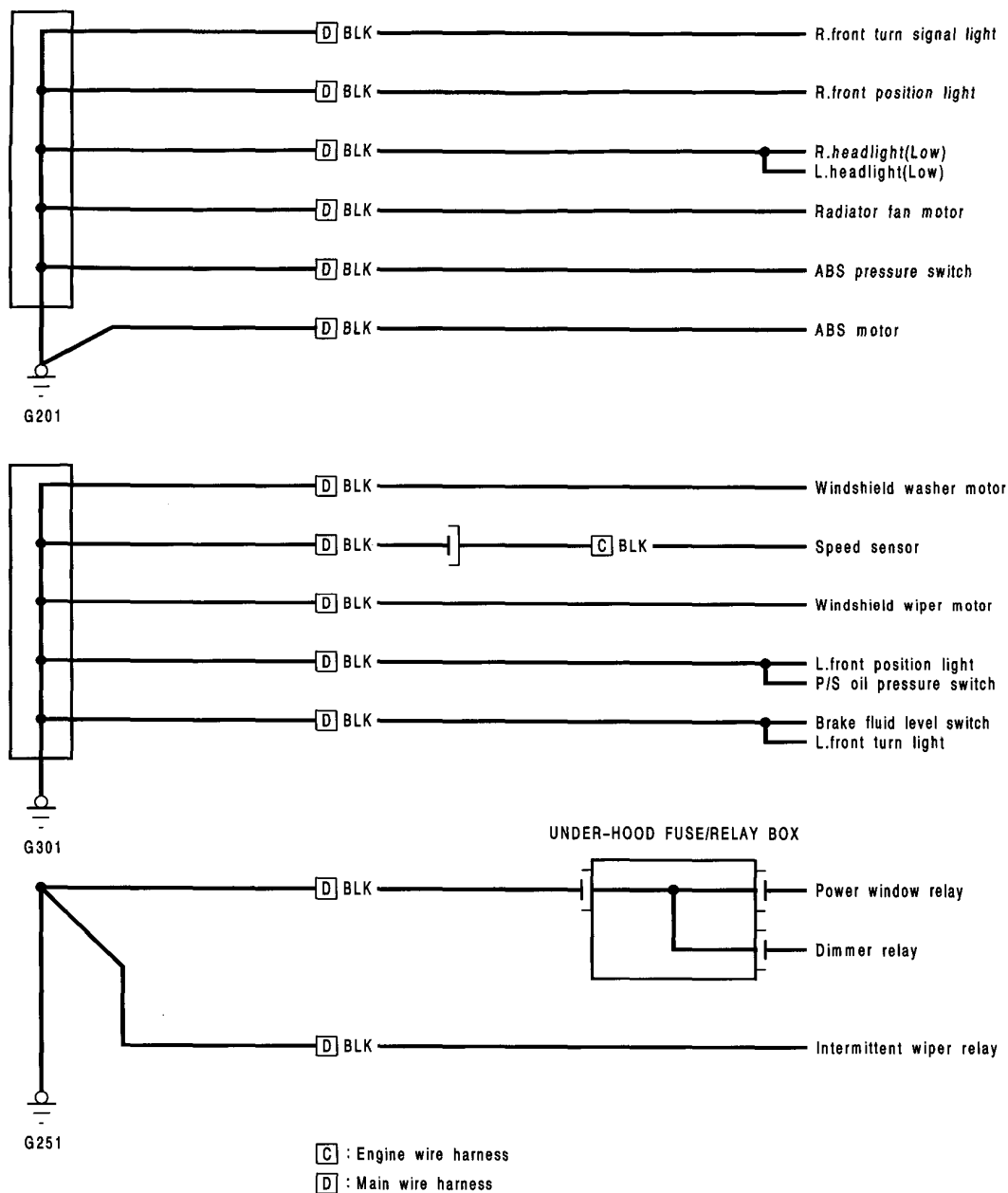
Ground Distribution

Circuit Identification



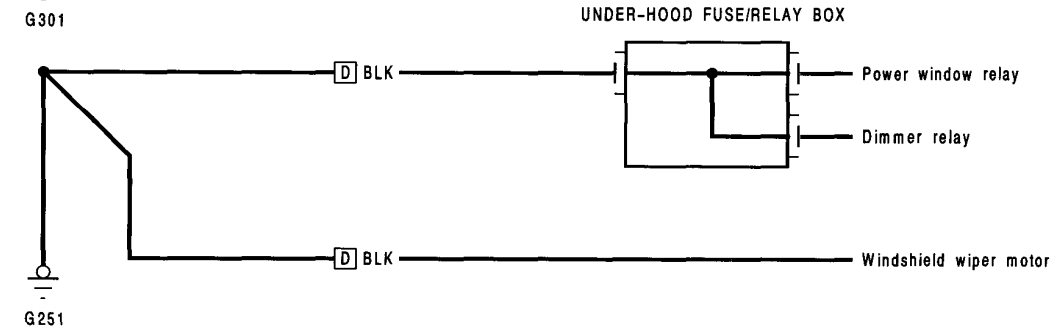
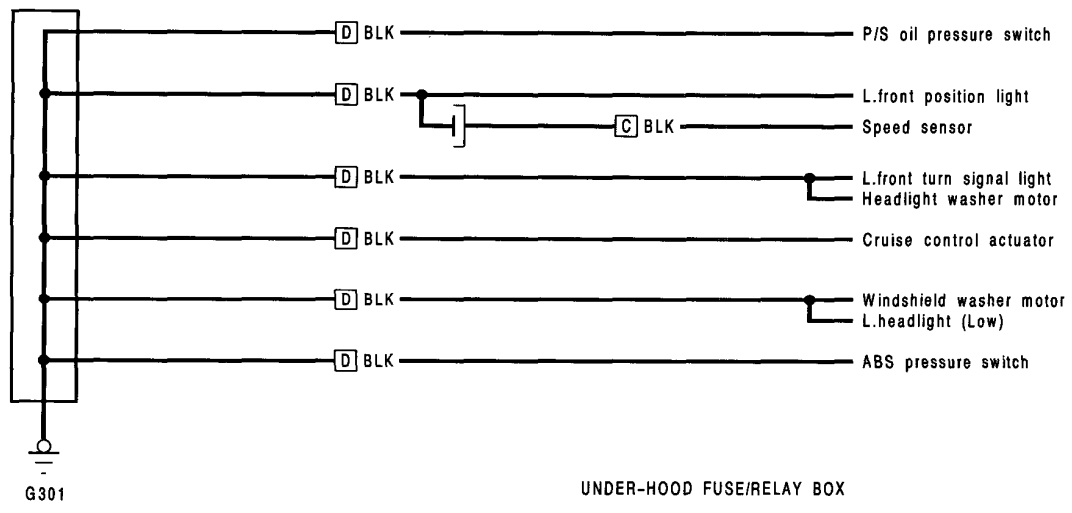
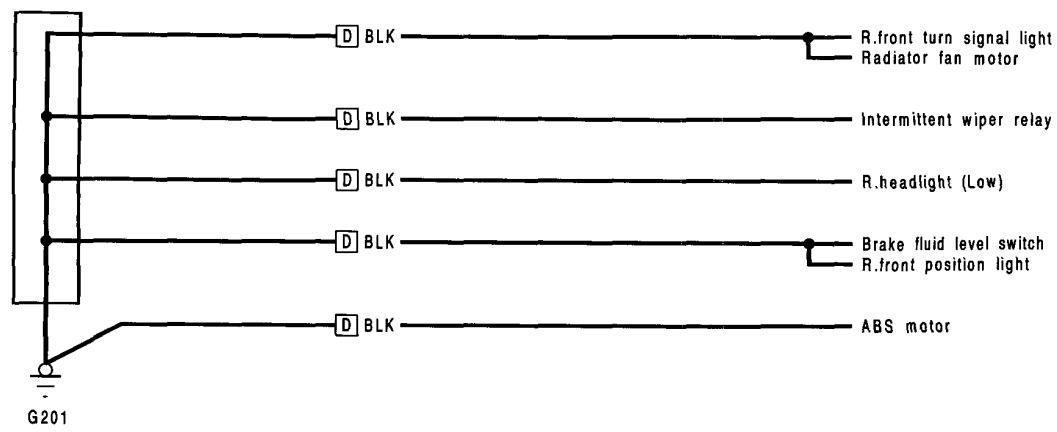


Circuit Identification (KG model)



Ground Distribution

Circuit Identification (KE model)

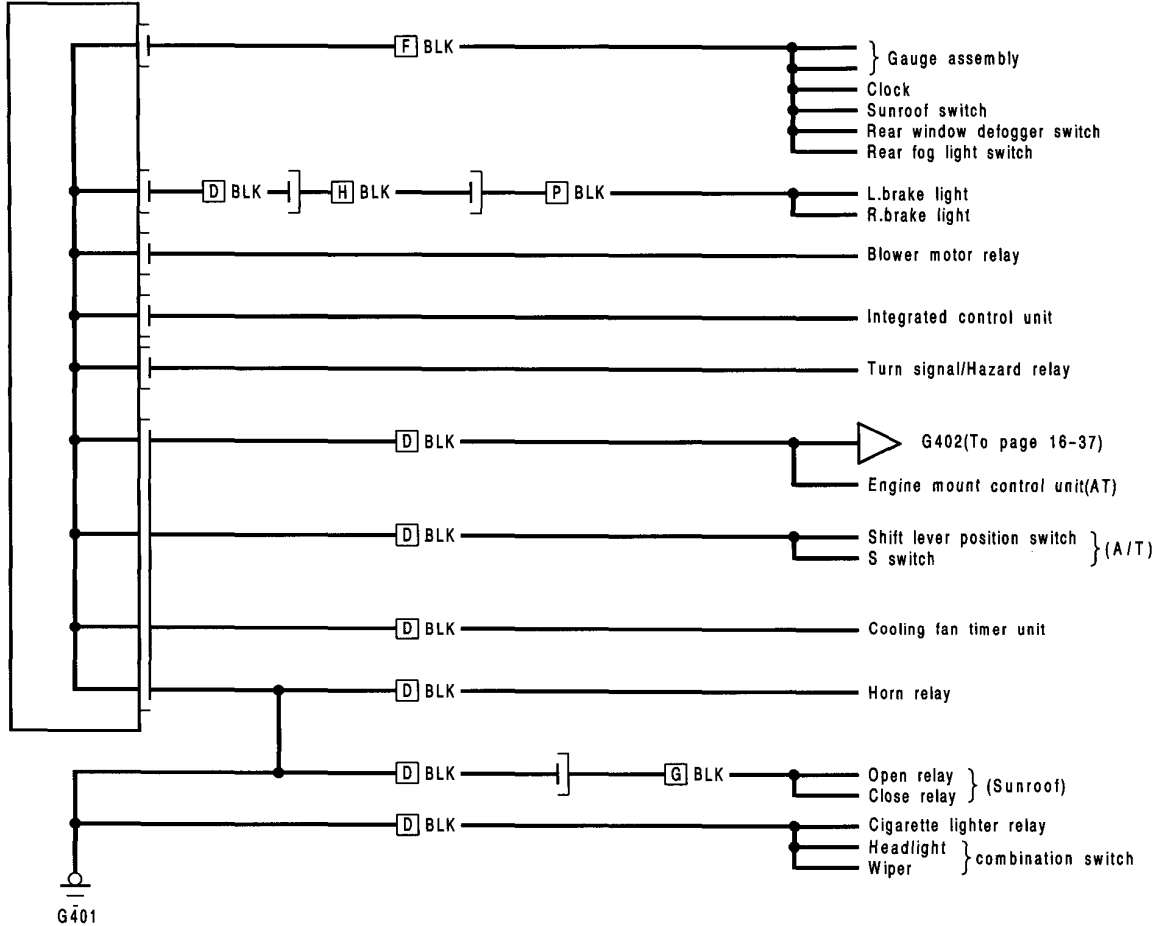


[C] : Engine wire harness
[D] : Main wire harness



KG model :

UNDER-DASH
FUSE/RELAY BOX

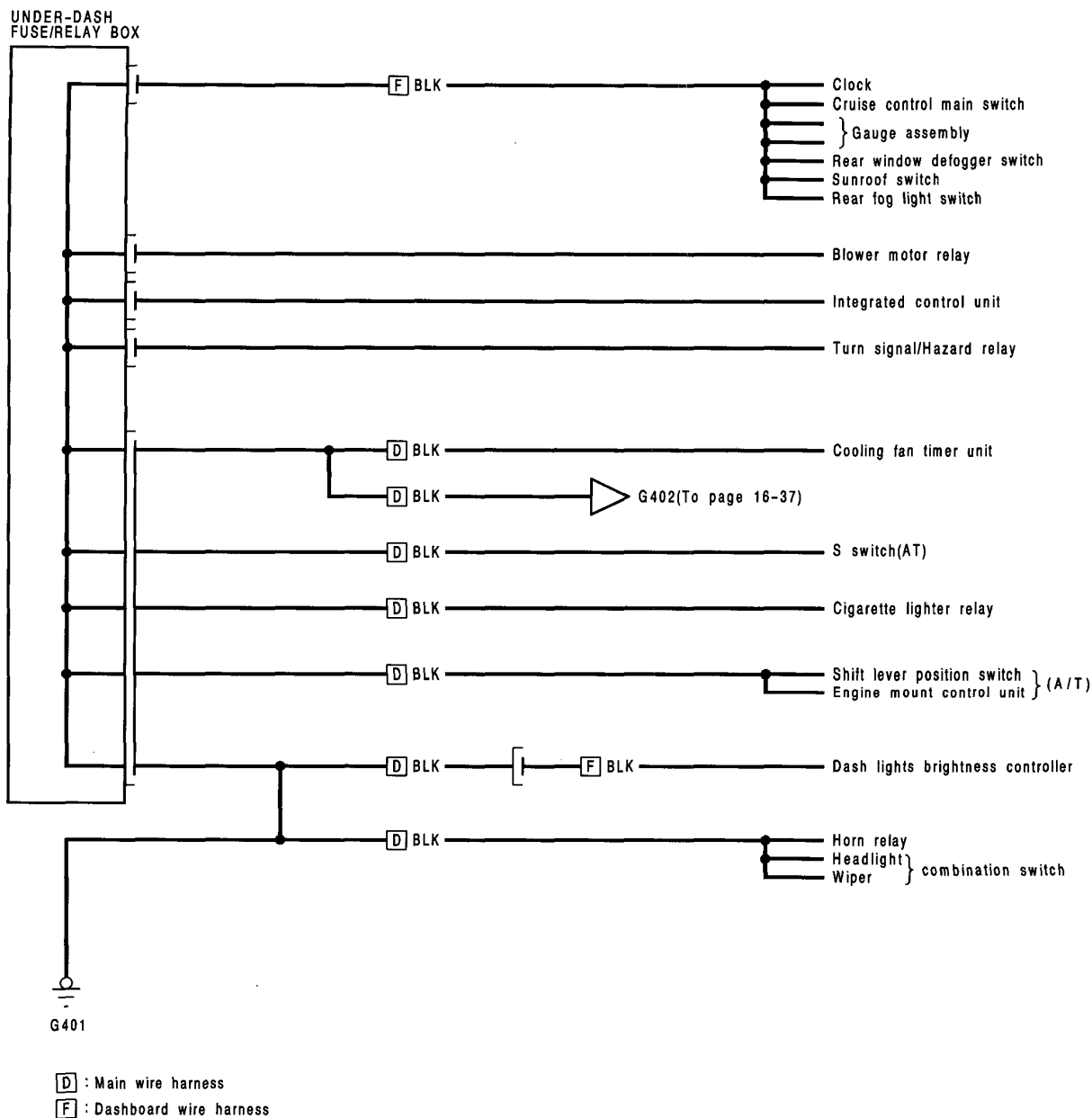


[D] : Main wire harness
[F] : Dashboard wire harness
[G] : Sunroof wire harness
[H] : Floor wire harness
[P] : Rear wire harness

(cont'd)

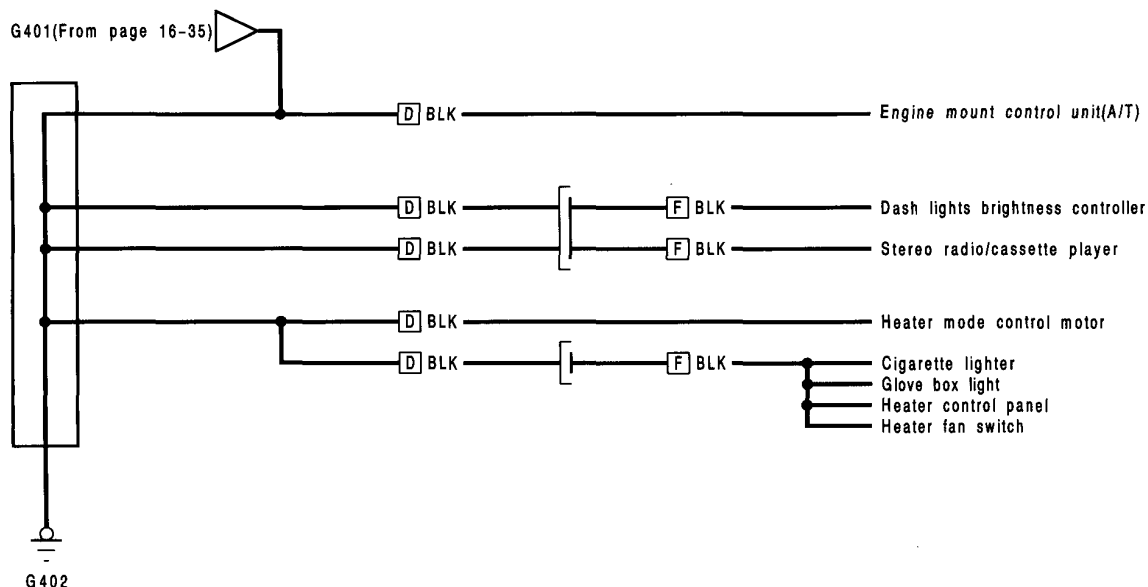
Ground Distribution

Circuit Identification (KE model)

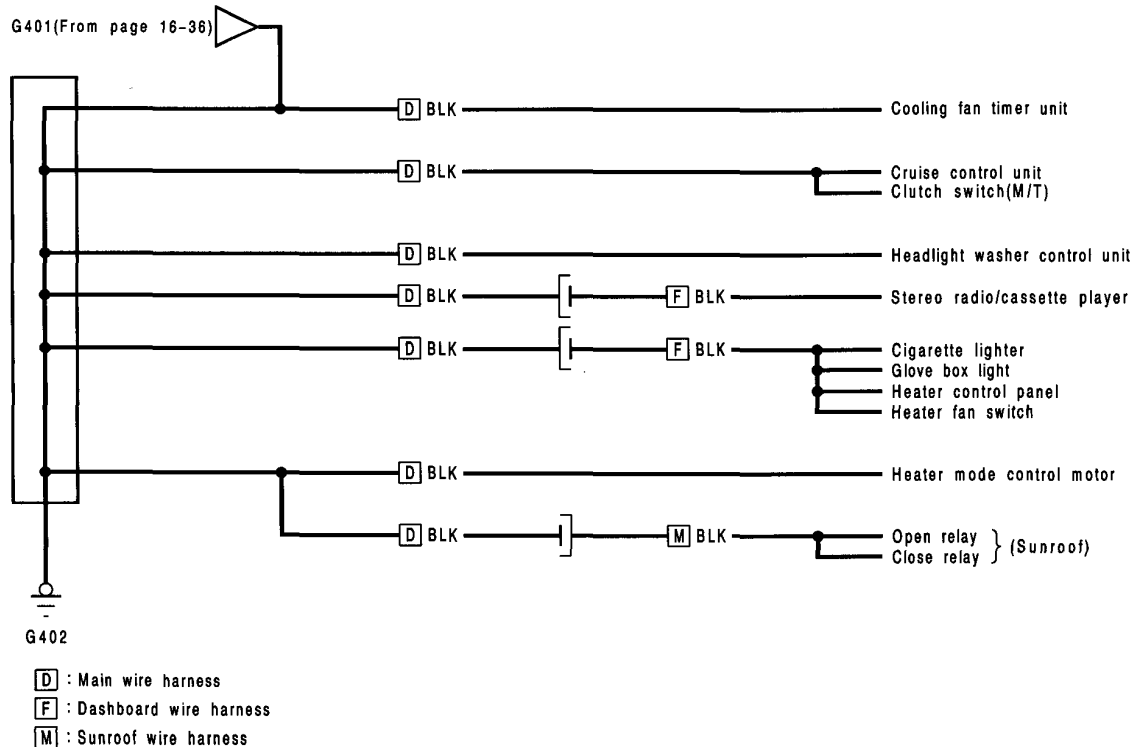




KG model:



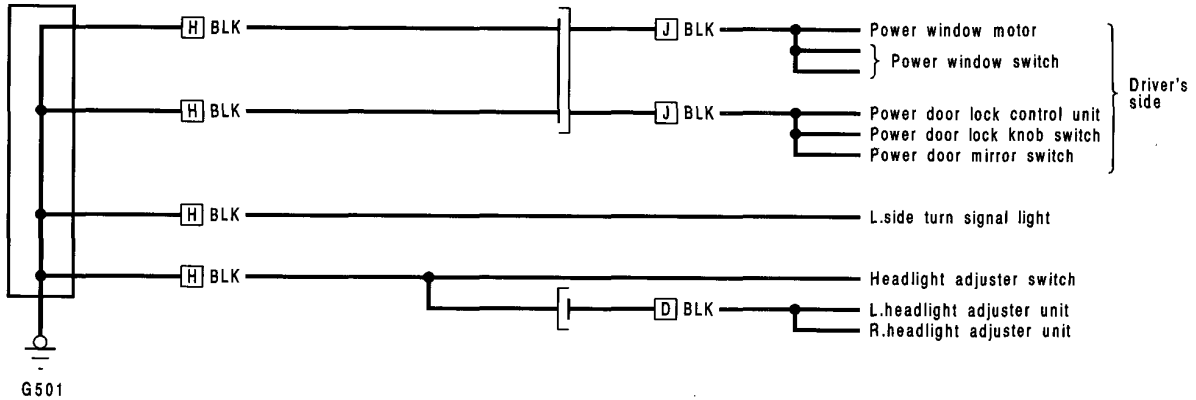
KE model:



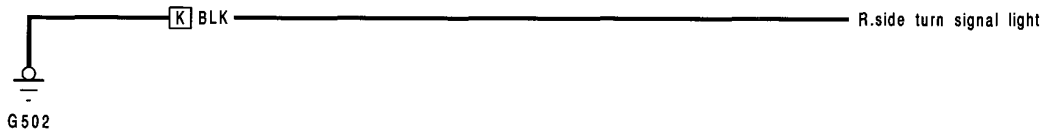
Ground Distribution

Circuit Identification

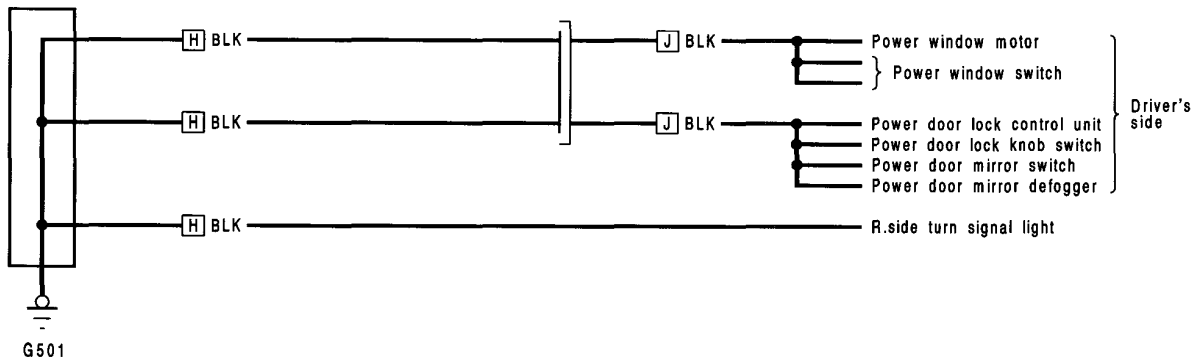
KG model:



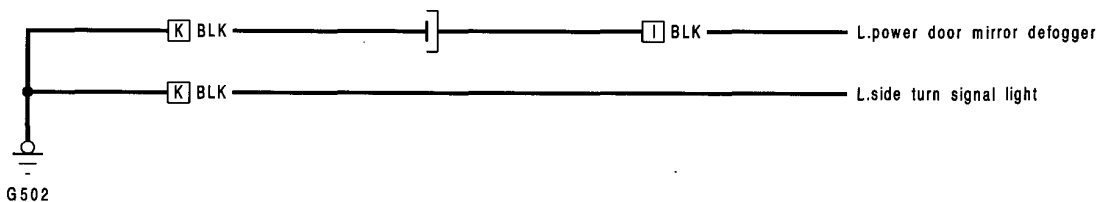
KG model:



KE model:



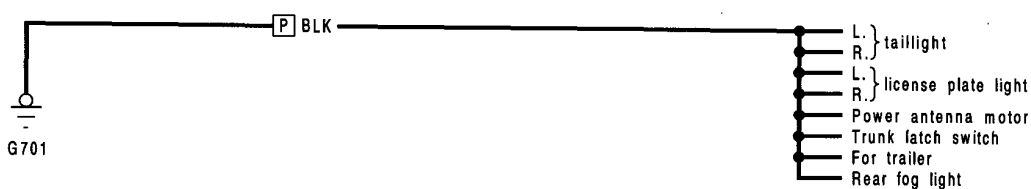
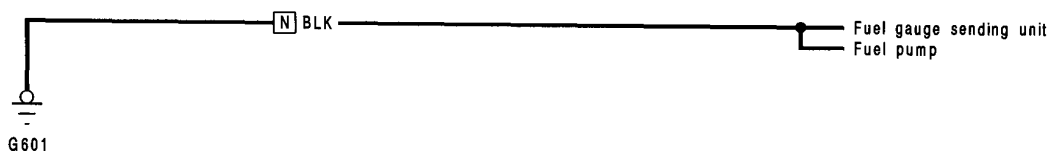
KE model:



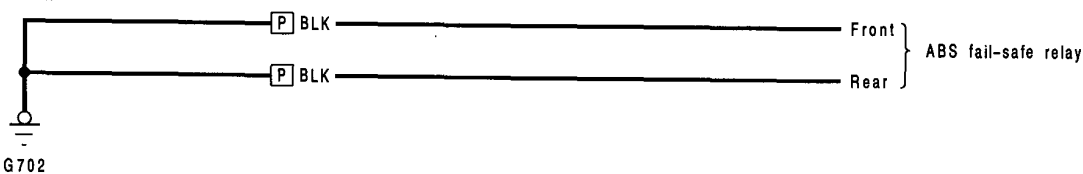
D : Main wire harness
H : Floor wire harness

I : Left door wire harness
J : Driver's door wire harness

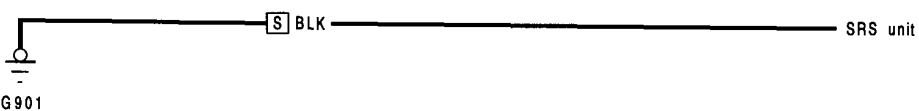
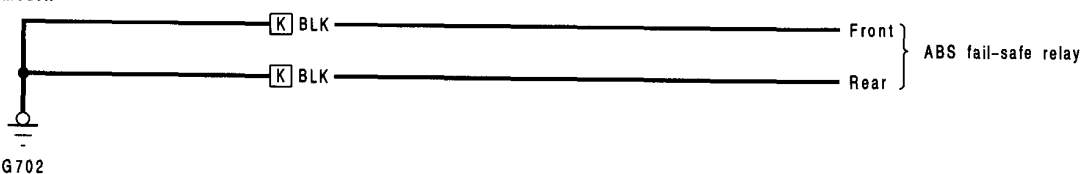
K : Side wire harness



KE model:



KG model:



[K] : Side wire harness

[P] : Rear wire harness

[T] : A/C wire harness

[N] : Fuel tank wire harness

[S] : SRS main harness

[V] : Defogger ground wire